



WILLOUGHBY
A PRIORY ACADEMY

Willoughby Weekly

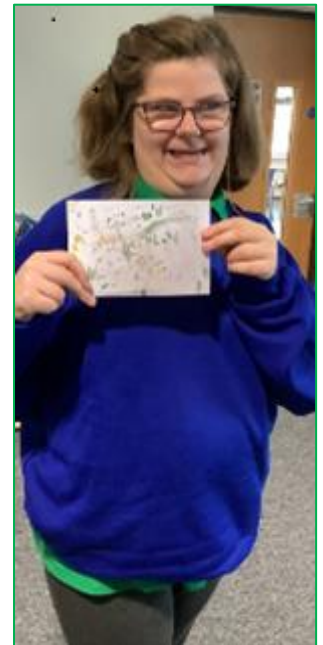
Friday 9th December 2022

Willoughby E-mail Address

Willoughby Pastoral e-mail address is no longer active, please make a note of the following e-mail address for all Willoughby correspondence willoughbyenquiries@prioryacademies.co.uk

Art Club

Pupils from Protea and Snapdragon's lunchtime art club created amazing Christmas prints to sell at the Christmas show. Each pupil created a plan and a draft for their projects they wanted to create.



Drum Performance

Ryan, from Protea Class, has been having weekly drum lessons with Jon from Lincolnshire Music Schools. On Wednesday, Ryan performed two Christmas songs to a selection of staff and pupils who joined in singing and playing bells. We are extremely proud of the progress Ryan has made.



Interim Headteacher: Mrs Vicki Billyard

Willoughby Academy South Road, Bourne, Lincolnshire, PE10 9JD

Tel: 01778 425203 **Email:** willoughbyenquiries@prioryacademies.co.uk **Web:** www.willoughbyacademy.co.uk

Willoughby Academy is part of The Priory Federation of Academies Trust. For further information please contact The Priory Federation of Academies Trust, Cross O'Cliff Hill, Lincoln LN5 8PW **Telephone:** 01522 889977 Registered Company No: 6462935. DfE Registration No: 136194



Jasmine Class

Jasmine want to express a big thank you to RNIB for delivering a special gift to our class and to Pat Gray for arranging this festive treat! We received a lovely audio CD from Santa along with some special Christmas gifts.



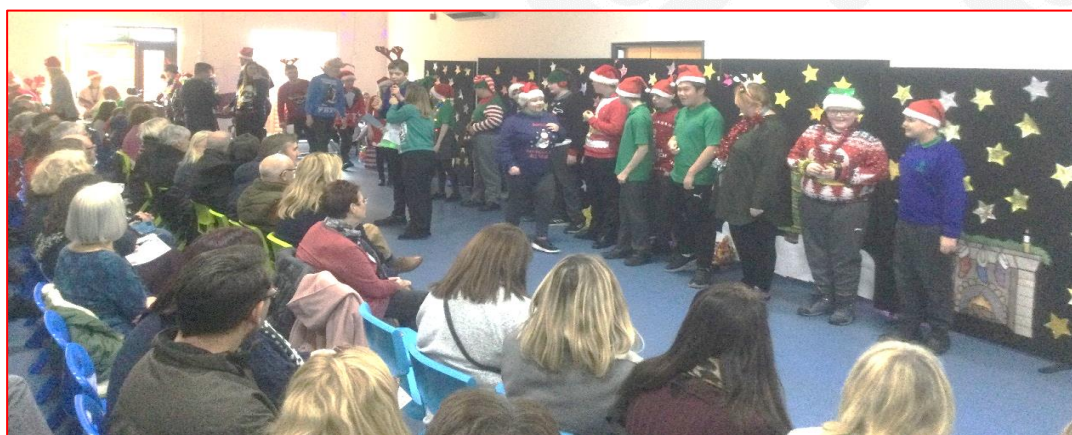
Reading Volunteer

Last Friday Susan Howe from Cummins spent time at Willoughby, reading to class groups. Pupils were engaged with the stories and Susan enjoyed her time at Willoughby meeting pupils and staff.



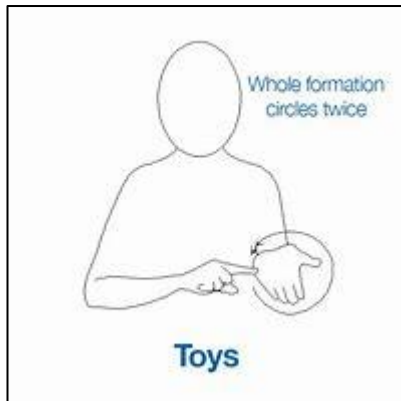
Performing Arts - Hillary Hull

A huge thank you for your support and participation in the Christmas Performances. It was lovely to see so many parents and carers singing along and getting in the Christmas spirit. I am so proud of all the children, we had lots of singing and dancing and even a few solo performances which demonstrates how their confidence has grown by taking part in Performing Arts lessons each week. I would also like to thank you for supporting this term's Post-16 Enterprise project by buying cards and cakes for Christmas. I look forward to seeing you at our next school productions.

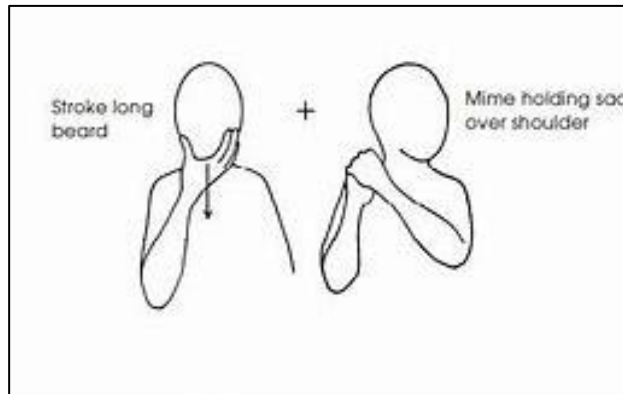


Makaton – Countdown to Christmas

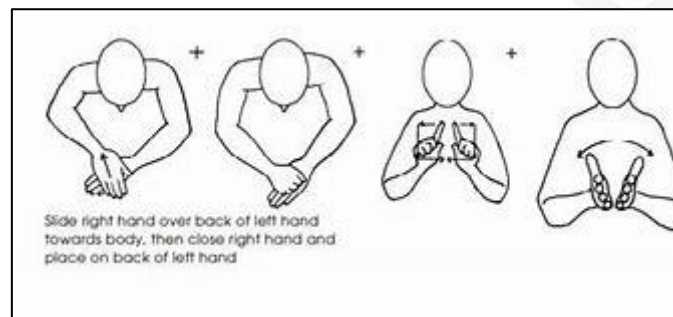
Toys



Father Christmas



Christmas Card



Star of the Week

Pupil	Class	Reason
Jaxson	Daisy	For being brave and trying new foods this week.
Teddie and Edward	Water Lily	For excellent behaviour when visiting Waterside Garden Centre.
Riley	Sunflower	For super exploring in all his lessons this week.
Cayson	Poppy	For super phonics work this week.
Georgia	Buttercup	For engaging well in activities all week.
Joe	Daffodil	For brilliant creativity.
Eva	Foxglove	For writing good colourful semantics sentences about the nativity story.
Fred	Leopard Lily	For lovely interaction with friends and focused work.
Sam	Tiger Lily	For an outstanding solo performance in the school Christmas play.
Dayton	Venus Flytrap	For trying really hard with his letter formation.
Ryan	Protea	For his amazing drum performance.
Jacob	Snapdragon	For consistent focus in lessons this week.
Oscar	Bluebell	For brilliant reactions during the Christmas performance.
Abi	Jasmine	For maintaining focus and accessing the eyegaze.
Anit	Cherry Blossom	For working really hard on his Maths and English targets.

Diary Dates

Date	Event
Monday 12 th December	AJM Wheelchair Clinic at Willoughby Academy.
Friday 16 th December	Christmas Jumper Day for pupils and staff – no charge.
Friday 16 th December	End of Autumn Term 2.
Christmas Holidays	Monday 19 th December – Tuesday 3 rd January.
Tuesday 3 rd January	Staff Training Day.
Wednesday 4 th January	Start of Term.
Friday 10 th February	End of Term.
Monday 13 th – Friday 17 th February	Half Term.
Monday 20 th February	Start of Term.

Working in partnership with Willoughby Academy

