



WILLOUGHBY
A PRIORY ACADEMY

Willoughby Weekly

Friday 20th January 2023

Protea and Snapdragon Class

Pupils in Protea and Snapdragon class were visited on Tuesday by Bob Nelson who shared his experiences working within the care industry. Pupils were supported to explore the different job roles within care and the skills needed to work in these areas. Bob's visit is part of Willoughby's career programme connecting and inspiring pupils to the world of work.



Sunflower Class

In Sunflower's art lessons this term we are thinking about our topic 'Feel the Force'. We are exploring different materials, objects and forces to create art and carry out experiments. This includes bubble painting, pushing cars down a ramp and creating rainbow art using crayons and hairdryers, it may get a little messy!



Headteacher: Mrs Vicki Billyard

Willoughby Academy South Road, Bourne, Lincolnshire, PE10 9JD

Tel: 01778 753053 **Email:** willoughbyenquiries@prioryacademies.co.uk **Web:** www.willoughbyacademy.co.uk

Willoughby Academy is part of The Priory Federation of Academies Trust. For further information please contact The Priory Federation of Academies Trust, Cross O'Cliff Hill, Lincoln LN5 8PW **Telephone:** 01522 889977
Registered Company No: 6462935. DfE Registration No: 136194



Food Technology Lessons

Snapdragon have been using a lot of 'force' this week by making pasta. It was a busy afternoon and pupils showed a huge amount of resilience as pasta makers can be very temperamental! However, as you can see the results were fantastic.



Peterborough United Football Club

Various classes were visited by Peter Burrow and Bobby Copping from Peterborough United football club on Wednesday. Pupils asked Bobby questions about his career as a football player, fitness, nutrition and challenges he has overcome along the way. Bobby is sending free tickets to all Willoughby pupils and staff to visit the POSH stadium and attend a game which we look forward to sharing with you when they arrive.



Buttercup Class

Buttercup class have been learning about winter, trying on warm, snuggly clothes and talking about the weather. We have been thinking about how the birds might find it difficult to dig up worms when the ground is hard and frosty. We made bird feeders out of oranges and egg boxes and hung them in our outdoor area to see what happened. Within a day we were visited by squirrels, robins, a black bird and some very fat, greedy pigeons! We have already had to refill the birdfeeders twice, so the birds must be very hungry! If we can be quiet and still enough we will try to join the RSPB Big Garden Birdwatch which is happening on 27-29 January. If you would like to join in at home here is the link [Big Garden Birdwatch](#) | [The RSPB](#)



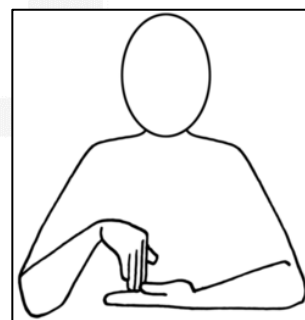
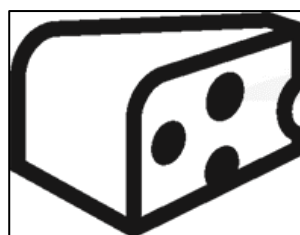
Makaton Sign of the Week

16th – 22nd January

This week's sign is...Cheese

Whole School Attendance

Our Whole School Attendance for week commencing Monday 16th January is 93%.



Star of the Week

| Pupil | Class | Reason |
|------------|---------------|--|
| Sidney | Daisy | For exploring and trying different foods. |
| Teddie-Rex | Water Lily | For great work in maths. |
| Scarlett | Sunflower | For a super week, calm and engaging in all lessons. |
| Jude | Poppy | For having amazing focus in phonics. |
| Georgia | Buttercup | For her amazing counting this week. |
| Matthew | Daffodil | For working really hard in his phonics lessons this week. |
| Matthew | Foxglove | For recognising personal space during our PSHE lesson |
| Scott | Leopard Lily | For independently walking to the library and back. |
| Katie | Tiger Lily | For brilliant communication all week. |
| Shihan | Venus Flytrap | For always trying his best and joining in, especially in phonics. |
| Luke | Protea | For amazing sentences on his iPad and helping other pupils in different classes. |
| Amie | Snapdragon | For positively engaging in lessons all week. |
| Athena | Bluebell | For fantastic switch work using two switches. |
| Jay | Jasmine | For using his big voice this week. |

Diary Dates

| Date | Event |
|--|---|
| Friday 10 th February | End of Term. |
| Monday 13 th – Friday 17 th February | Half Term. |
| Monday 20 th February | Start of Term. |
| Friday 24 th February | Oral Health Coffee Morning 10am – 11am. |
| Thursday 2 nd March | World Book Day – Dressing up day. |
| Friday 31 st March | End of Term. |
| Monday 3 rd April – Friday 14 th April | Easter Holidays. |
| Monday 17 th April | Start of Term. |
| Monday 1 st May | School Closed – Bank Holiday. |
| Monday 8 th May | School Closed – Bank Holiday. |
| Friday 26 th May | End of Term. |
| Monday 29 th May – Friday 2 nd June | Half Term. |
| Monday 5 th June | Start of Term. |
| Wednesday 19 th July | End of Term. |

Working in partnership with Willoughby Academy

