



Willoughby School

Willoughby Weekly, Autumn Term 2

Friday 9<sup>th</sup> November 2018

### Marks and Spencer Bag Packing

On the 19<sup>th</sup> October and 1<sup>st</sup> November, pupils from Academy 1 and Academy 2 volunteered to pack customer bags in the Marks and Spencer Food Hall store in Bourne. They did an excellent job and raised an impressive £159.44. Well done to everyone involved.



### Chicken Pox Notification

A letter has been sent home to parents/carers to inform you we have a confirmed case of chicken pox within the school pupil population.

If a child is suspected of having chicken pox, parents/carers will be contacted immediately and asked to collect their child from school. All children should remain at home until all chicken pox spots have crusted over to avoid the further spread of the illness.



### Fireworks Art

Lilac Class have enjoyed creating firework pictures during their art activity. Pictured are pupils using their artistic talents.

### School Photographs

Tempest Photography were in school on Friday 2<sup>nd</sup> November to take individual school photographs of pupils. The proofs will arrive in school within 7-10 days, these will be sent home for you to review. Parents/Carers can either order online, or via the school. **Online orders:** if you choose to order online within 7 days of receiving the proof, you will qualify for free

delivery of your photographs back to school. Alternatively you can pay a small charge to have the photographs sent to you at home. **Orders via school:** once the school has distributed the proofs, payments will need to be made within 7 days. Orders received within this time frame will qualify for free delivery back to school. Orders received outside of this window will need to pay an additional delivery charge.

### Little Miracles Bourne Group

Invites all parents/carers of children with special needs, disabilities and or life limiting illnesses to their group on **Monday 12<sup>th</sup> November 9am – 11.30am**, at Butterfields Centre, 2 North Road, Bourne, PE10 9AP.



### Poppy Appeal

Thank you to everyone who has contributed towards the Royal British Legion poppy appeal.



Willoughby School, South Road, Bourne, PE10 9JD  
Tel: 01778 425203 Fax: 01778 425284  
[www.willoughby.lincs.sch.uk](http://www.willoughby.lincs.sch.uk)

## Assemblies

All pupils at Willoughby take part in an assembly each Friday. Our PMLD classes will hold their assembly in class. Our SLD classes attend either an Early Years, Primary or Secondary assembly each Friday. During these assemblies pupils celebrate aspects of the school week, reflect on what they have experienced and enjoy music and singing. Each class nominate a star of the week who is given their certificates during this time. At certain times of the school year classes will host an assembly, this could be to perform for their peers or show/demonstrate something they have learnt.

## Whole School Rewards

Pupils may be awarded star of the week by their class team for outstanding work, effort or contribution to school life. They are awarded a certificate in assembly and will display their star in Reception on the 'Star of the Week' board. At the end of each term pupil stars are counted and collated and at the end of the academic year the pupil in primary/secondary with the highest number of stars will be awarded the shield for 'Star of the Year'. In addition, all classes have their own personalised reward system they use to reward hard work, attainment and effort within the school community. Special thanks go to Mr and Mrs Gilding for making and providing the wooden stars.

## Children in Need Day Friday 16<sup>th</sup> November

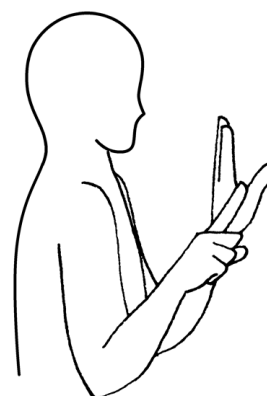
As part of our annual support of the Children in Need Day, we would like to extend the offer of allowing children the opportunity to participate in fund raising activities during school time. Pupils will be allowed to dress up in different clothes for the day, for a donation of £1 per pupil. Students in Academy 2 will be baking some yummy treats and making hot chocolate on the day, which will be on sale. There will also be a few fun games to play on the day for a small fee. All proceeds from these will go towards Children in Need. If you would like to send in some extra money in order for your child to participate in these, please do. We look forward to a fun filled day.



If you would like to send in some extra money in order for your child to participate in these, please do. We look forward to a fun filled day.

## Sign of the Week 5<sup>th</sup> November – 11<sup>th</sup> November

Sign = **Yellow** Finger spell 'Y'



## Dates for Diaries

Sun 11 <sup>th</sup> Nov	Bourne Remembrance Parade, 10:00 – 11:00
Fri 16 <sup>th</sup> Nov	Children in Need Day, All Day
Wed 28 <sup>th</sup> Nov	Parents Evening, 15:30 – 18:00
Fri 14 <sup>th</sup> Dec	Christmas Fayre & Christmas Jumper Day, 14:00 – 16:00
Mon 17 <sup>th</sup> Dec	Christmas Sale
Wed 19 <sup>th</sup> Dec	Christmas Dinner & Carols around the tree, 13:45 – 14:15
Thurs 20 <sup>th</sup> Dec	Christmas Disco, 13:15 – 13:45
<b>Thurs 20 Dec</b>	<b>Last day of term</b>

Willoughby School, South Road, Bourne, PE10 9JD  
Tel: 01778 425203 Fax: 01778 425284  
[www.willoughby.lincs.sch.uk](http://www.willoughby.lincs.sch.uk)