



Willoughby School

Willoughby Weekly, Summer Term 2

Friday 7th June 2019

Welcome back to school - Summer Term 2

Welcome back to school to start Summer Term 2. This is the last term for the academic year. Classes have many activities planned for the final school term. Look out for class updates/activities, these will be featured in future newsletters.

M&S Employees volunteer in the school paddock

On Tuesday and Wednesday we welcomed a total of 8 Marks and Spencer employees from Bourne and Spalding stores into school. The volunteers worked extremely hard in the paddock cutting back branches that were hindering access along the wheelchair friendly paths through the trees. The team have also refreshed several planting areas for classes to utilise. The areas have been weeded, topped up with fresh soil and raked ready for planting vegetables and flowers. Pictured are Tuesday's team under the supervision of Willoughby pupil Matthew. "Spend It Well" is the motto of M&S and we would like to thank the two teams for spending their time with us very well.



Lincolnshire Parent Carer Forum

LPCF invites you to the Annual General Meeting and launch of the redeveloped website.

Date: Monday 10th June 2019

Time: 10.15am for 10.30am start

Venue: "The Venue", Navenby, off Grantham Road near the junction with Pottergate, Navenby, Lincoln, LN5 0JJ. A light buffet lunch will be provided.

If you wish to attend please call 07925 232 466 and leave a message or e-mail admin@lincspcf.org.uk

Willoughby School/South Kesteven lottery scheme

Willoughby School have joined the South Kesteven District lottery scheme with the launch of our school page. To start supporting, visit www.LotterySK.co.uk and search for Willoughby School. 50% of all tickets sold from our page go to us, plus 10% goes to other local good causes. Tickets cost £1 per week, prizes up to £25,000!!



Willoughby School, South Road, Bourne, PE10 9JD
Tel: 01778 425203
www.willoughby.lincs.sch.uk

Easy Fundraising Information

By registering with Easyfundraising and shopping on-line you will collect a free donation for Willoughby School. There are over 3,000 shops and sites on board ready to make a donation, including Amazon, eBay, John Lewis, Booking.com, Sainsburys etc and it doesn't cost you a penny extra!



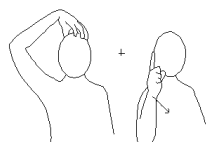
It's really simple, all you have to do is:

1. Go to www.easyfundraising.org.uk and search for Willoughby School – Bourne and sign up for free.
2. Every time you shop online, go to easyfundraising first, pick the retailer you want and start shopping.
3. After you've checked out, that retailer will make a donation to the Willoughby School for no extra cost whatsoever!

School Uniform Donations

Do you have Willoughby School uniform that you no longer need or is too small for your child? If you do, the School Office will happily collate the uniform in preparation for a school uniform sale at the Garden Party on Friday 12th July.

Makaton Sign of the Week = Queen



Queen



Bourne Music Festival

Two Red Base students were rocking out last night, taking part in a Schools Music celebration at the Bourne Festival site a Schools Music celebration at the Bourne Festival site. Ben and Finley joined a collaborative choir of over 100 children from 6 local primary schools to sing 3 songs on stage, in front of a packed audience. The boys sang their hearts out to a traditional African song and Hit the Road Jack, also signing along to Shotgun. The two-hour concert of local, young talent was a huge success, organisers are hoping this will be an annual event.

Wanted – small clear plastic pop/water bottles

In preparation for Science Day, Lilac Class would like small clear plastic pop or water bottles to be used to create lava lamps. They need to collect 24 in total for their experiment. If you have any please send them into school.



Willoughby Academy

All parents and carers will have received a letter today regarding Willoughby School joining the Priory Federation of Academies Trust. If you have any queries or questions in relation to this news, please email them to Kate Michelson; katherinemichelson@willoughbyschool.com - Clerk to the Governors, by 16:00 on Friday 14th June. We will then put further details and a 'frequently asked' questions article in a future newsletter.

Willoughby School, South Road, Bourne, PE10 9JD
Tel: 01778 425203
www.willoughby.lincs.sch.uk