

Chestnut Class

Autumn Term 1 Newsletter

2025-2026



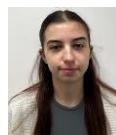
Chestnut Class Staff



Leanne



Michelle



Lily

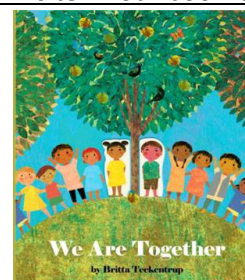


Libby

Welcome

Welcome back everyone! We hope that you all had a wonderful summer break. We're so excited to get stuck-in to this academic year; as we have so many exciting things planned! We can't wait to work with you all, and to see how well you all progress this year!

This term our book is...



Curriculum

During our Communication and Language lessons we'll be reading a book called 'We are together'. This term we will be working on our fine motor skills and learning about the structure of a sentence, as well as working on handwriting skills. We will also be learning new vocabulary each week.

In our Cognition and Learning lessons, we will be doing place value, strengthening our number skills and reinforcing previous knowledge.

During Science, we will be learning about animals including humans; looking at the different parts and what they need to survive. We will also start looking at our senses.

In PSHE lessons, we will be answering the big question, *Where do I belong?* We will be looking at what we like and dislike, our strengths and who our trusted adults may be.

As well as these core subjects, we'll be enjoying lessons in cookery, P.E., Life skills, Forest School, dance and art.

Whole School Diary Dates

Friday 19 th September	NHS Flu Vaccinations - pupils
Tuesday 30 th September	School Photos
Tuesday 14 th October	Parents Evening
Wednesday 15 th October	Parents Evening
Friday 24 th October	End of Term
Monday 3 rd November	Start of Term

Food and nutrition – Please log into your ParentPay account where a payment item has been raised. We would appreciate it if you could make a voluntary contribution.

Key Class information

Please send in any snacks/drinks for your child.

Wednesday	Forest school clothing
Thursday	Cooking
Friday	PE - trainers

Please ensure you send in clothing and footwear suitable for above activities.

Keeping in touch

Please use the home school book or Tapestry to inform us of any important information relating to your child. We will check it every day but please log into Tapestry for your daily class update. Don't forget to add any home experiences to Tapestry as this provides us with a valuable link to home.

Any absence or to notify us of a medical appointment or for general enquiries please email: willoughbyenquiries@prioryacademies.co.uk