

## Elder Class

Autumn term 1 Newsletter

2025-2026



## Elder Class Staff



Kelly



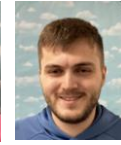
Chloe



Sophie



Catherine



Owen

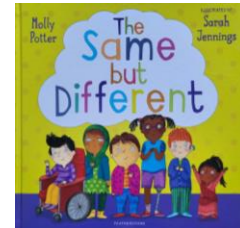


Claire

### Welcome

We hope you have all had fantastic summer holidays. We've been working hard to get our new classroom ready for the start of term, we hope you like it. Kelly will be teaching Mon, Tues, Wed and Fridays and Chloe will be teaching on Thursdays.

### This term our book is...



### Curriculum

Our school topic this term is 'You've got a friend in me' and we will be using our book and the film 'Toy Story' to explore the ideas of friendship to describe what a good friend is, through both our English and PSHE lessons.

We will continue to develop our reading through phonics and comprehension work.

In maths we are learning about the place value of 2, 3 and 4 digit numbers and what the different parts of the number mean, with Kelly. On Thursdays, the class will be learning about shape with Chloe.

Our science learning will be all about animals, including humans, how their offspring grow, their life cycles and survival.

We are lucky enough to have dance with Chloe (a different one!) on Wednesdays and Forest School on Thursdays.

### Whole School Diary Dates

Friday 19 <sup>th</sup> September	NHS Flu Pupil Vaccinations
Tuesday 30 <sup>th</sup> September	School Photos
Tuesday 14 <sup>th</sup> October	Parents Evening
Wednesday 15 <sup>th</sup> October	Parents Evening
Friday 24 <sup>th</sup> October	End of Term
Monday 3 <sup>rd</sup> November	Start of Term

Food and nutrition – Please log into your ParentPay account where a payment item has been raised. We would appreciate it if you could make a voluntary contribution.

### Key Class information

Please send in any snacks/ drinks for your child.

Monday	
Tuesday	Art & cookery
Wednesday	Dance with Chloe
Thursday	Forest School
Friday	

Please ensure you send in clothing and footwear suitable for above activities.

### Keeping in touch

Please continue to use the home school book or Tapestry to inform us of any important information relating to your child. We will check it every day but please log into Tapestry for your daily class update. Don't forget to add any home experiences to Tapestry as this provides us with a valuable link to home.

Any absence or to notify us of a medical appointment or for general enquiries please email: [willoughbyenquiries@prioryacademies.co.uk](mailto:willoughbyenquiries@prioryacademies.co.uk)