

Mulberry Class  
Autumn term 1 Newsletter  
2025-2026



Steve



Maureen



Sally



Katy



Natalie

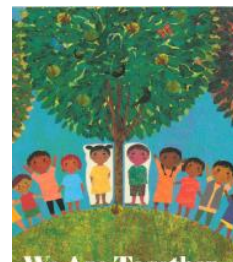
Welcome

Welcome back everyone and we hope you had a lovely summer break!

We would like to welcome Steve as the new Class Teacher – working Wednesday - Friday. Maureen will continue to lead on Monday and Tuesday.

We plan for a busy term ahead.....

This term our book is...



Curriculum

Our theme this term is 'You've got a friend in me'.

In literacy, we will settle back with 'Into the Blue', with a sensory story and writing about our holidays before moving on to our new book 'We are Together'. We will do a daily See and Learn activity and enjoy end of day stories. In maths we are looking at numbers, number bonds and patterns.

We are studying animals in Science and in PSHE we will be thinking about self and identity. We will also look at feelings and consider how our body feels in interception lesson- beginning with our hands and feet.

We continue to enjoy Art, Cookery, Forest School and in PE we are keeping fit by practicing fundamental skills.

Whole School Diary Dates

Friday 19 <sup>th</sup> September	NHS Flu Pupil Vaccinations
Tuesday 30 <sup>th</sup> September	School Photos
Tuesday 14 <sup>th</sup> October	Parents Evening
Wednesday 15 <sup>th</sup> October	Parents Evening
Friday 24 <sup>th</sup> October	End of Term
Monday 3 <sup>rd</sup> November	Start of Term

Food and nutrition – Please log into your ParentPay account where a payment item has been raised and we would appreciate it if you could make a voluntary contribution.

Key Class information

Monday

Tuesday

Wednesday – Art, Cookery, Forest School

Thursday

Friday

Keeping in touch

Please use the home school book to inform us of any important information relating to your child. We will check it every day but please log into Tapestry for your daily class update. Don't forget to add any home experiences to Tapestry as this provides us with a valuable link to home.

Any absence or to notify us of a medical appointment or for general enquiries please email:

[willoughbyenquiries@prioryacademies.co.uk](mailto:willoughbyenquiries@prioryacademies.co.uk)